



Euroleague
FOR LIFE SCIENCES

WWW.EUROLEAGUE-STUDY.ORG

STUDY ELLS WHERE

THE EUROLEAGUE FOR
LIFE SCIENCES (ELLS) -
A NETWORK OF LEADING
EUROPEAN UNIVERSITIES

- SUMMER SCHOOLS
- STUDENT EXCHANGE
- INTERNATIONAL MASTER PROGRAMMES
- SCIENTIFIC STUDENT CONFERENCES
- INTERNATIONAL NETWORKING



CONTENTS

1. Welcome to the Euroleague for Life Sciences (ELLS)!	4
2. What is ELLS? - An Introduction	6
3. Studying within ELLS	8
4. The ELLS Universities	12
University of Natural Resources and Life Sciences, Vienna (BOKU)	12
Czech University of Life Sciences Prague (CULS)	14
University of Copenhagen, Faculty of Science (SCIENCE)	16
Swedish University of Agricultural Sciences (SLU)	18
University of Hohenheim (UHOH)	20
Wageningen University (WU)	22
Warsaw University of Life Sciences - SGGW (WULS-SGGW)	24
5. ELLS International Partner Universities	26



1. Welcome to the Euroleague for Life Sciences (ELLS)!

The booklet in your hands came forth from the joint effort of fourteen students from seven different countries. All are members of ELSA, the Euroleague Students Association. First published; 2010. Amended and republished in 2014 by ELSA and the IRO Group. The ELLS (Euroleague for Life Sciences) cooperation between seven European universities was founded in 2001 and is based on several aspects binding the universities together. First of all, they all have a shared background in agriculture and related sciences. Most are unique in this field within their country and therefore look further for ambitious partners concerning quality assurance, benchmarking and educational and research innovation. Secondly, shifting educational interest on a local, regional and global level from agriculture towards life sciences has also made the universities join forces in order to help each other stay up-to-date and to continue to attract students. They learn from each other's experiences and struggles and thereby make life on a turbulent educational market a little bit easier. A third important aspect is the universities' aims of internationalisation. In order to attract more new students and give existing students extra competences and improve their future perspectives, the universities want to offer and facilitate international experiences. The best way to do that is through strong partnerships.

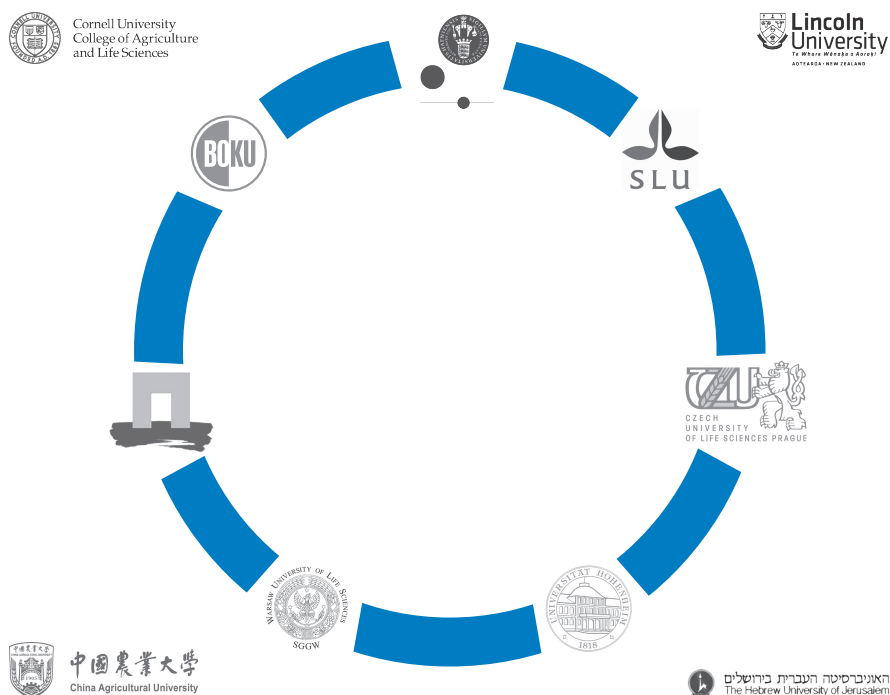
Over the years that have passed, constructing, maintaining, and improving a network turned out to be more difficult than anticipated. People, cultures, and government regulations differ and a dedicated commitment is hard to obtain in a society as demanding as today's. This inability to receive commitment has regularly held, and continues to hold us back in achieving our ambitions. However, as long as there is enthusiasm and willingness, even with just a small budget and a couple of people, things can happen.

We, as students, consider it our job to keep the network on the right track, and to promote and show commitment. This is one of the reasons why we came up with this booklet: to show what this network, and all of the effort that is put into it, is worth to us, and to demonstrate our confidence in the future. In the end, we all strive for a



common goal: students who are well prepared for their future jobs in a changing and complex world. The ELLS network is a good step in that direction.

We hope this booklet will inspire you to delve deeper into our network and to pursue such an international experience. All of our universities have different things to offer. Take a careful look at the unique offers and environments and you will certainly find a favorite among them, if not many. You are sure to love your experience, no matter which one you choose, so go for it!



2. What is ELLS?

Exchange your experiences!

The Euroleague for Life Sciences (ELLS) is a network of leading universities co-operating in the fields of Natural Resource Management, Agricultural and Forestry Sciences, Life Sciences, Veterinary Sciences, Food Sciences, and Environmental Sciences.

The members of the Euroleague for Life Sciences are:

- University of Natural Resources and Life Sciences, Vienna (BOKU), Vienna, Austria
- Czech University of Life Sciences Prague (CULS), Prague, Czech Republic
- University of Copenhagen, Faculty of Science (SCIENCE), Copenhagen, Denmark
- Swedish University of Agricultural Sciences (SLU), Uppsala, Alnarp, Skara and Umeå, Sweden
- University of Hohenheim (UHOH), Stuttgart, Germany
- Wageningen University (WU), Wageningen, the Netherlands
- Warsaw University of Life Sciences – SGGW (WULS-SGGW), Warsaw, Poland

Partners are: Lincoln University, China Agricultural University, Cornell University and Hebrew University of Jerusalem.

Why ELLS?

Students are the main target group and the foundation of ELLS. The focus of the network is on joint teaching and learning, student and staff mobility, and quality assurance. Graduating from ELLS you – the students – will be highly qualified and prepared for the demands of the European and international job market.

The specific objectives of ELLS are:

- to offer students additional values by expanding existing activities and by developing new joint programmes in the field of Life Sciences
- to support the high quality of education by the sharing of expertise and facilities



- to provide transparent and easily accessible information about joint ELLS study programmes
- to increase student mobility by simplifying the process of student exchange.

ELSA

ELLS is not only a network FOR students, but also a network OF students. ELSA – the Euroleague Student Association – is the students' voice within ELLS. It consists of 22 members, two per university, and is an independent part of ELLS. We are working on new ideas and new possibilities for student mobility together with the other ELLS groups. Student mobility is a main topic of ELLS and it is therefore necessary to involve students directly, to know their needs, preferences and ideas. Therefore, ELSA sends representatives to all ELLS working groups and takes part in all ELLS activities. Additionally, we also go through all ELLS papers and discuss them from the student point of view.



3. Studying within ELLS – What do we have to offer?

The Euroleague for Life Sciences offers

- International Master's Programmes
- Summer Schools/Intensive Programmes
- Student Exchange – Grants and Awards
- International Networking
- Joint Teaching and Lecturer Mobility

International MSc Programmes

A joint ELLS Master's degree consists of courses and a Master's thesis equivalent to 120 ECTS, as is the case with any other “ordinary” Master's programmes. What is special about the joint programme is that you start your studies at one ELLS university and then continue at another ELLS university (or even two other universities). In the end you will receive either a joint degree of all universities where you have studied, or two degrees (one from each university). Apart from gaining general academic skills, you will gather intercultural experiences and improve your foreign language and communication skills.

At the moment ELLS offers the following international MSc Programmes:

- Animal Breeding and Genetics
- European Forestry
- EUR-Organic - Organic Agriculture and Food Systems
- NARMEE - Natural Resources Management and Ecological Engineering
- Safety in the Food Chain
- EnvEuro - Environmental Science in Europe





Please find more information at:

<http://www.euroleague-study.org/master>

- Get a double degree that is recognized in TWO different countries!
- Broaden your horizons in your field of study!
- Build a network of international contacts!
- Experience a variety of different educational and scientific institutions!
- Get to know a new country and culture!

Summer Schools/ Intensive Programmes

If you want to gain international experience without spending a whole semester/year abroad, you can always attend an ELLS summer school or intensive programme. A summer school is an intensive 2-3 week course during the semester break organised by different ELLS universities every summer. (Some intensive programmes also take place during the semester). It is composed of lectures, field trips, video conferences and group work and is usually fully accredited with 4-7.5 ECTS by your home university.





Every year, ELLS offers between 6 and 10 summer schools covering diverse topics like “Organic Food Production Chain”, “Environmental Case Studies”, “Insect Chemical Ecology” or “Rural Development”. Please find a list of the currently offered summer schools at: www.euroleague-study.org/summer

Spend a different summer

- Earn academic credits in breathtaking natural environments!
- Combine theoretical input with practical field work!
- Get to know other students in your field from all over the world!
- Enjoy social activities in an open, diverse and new environment!

Networking and Grants – ELLS Scientific Student Conferences

Today, networking is an essential tool for being successful in the professional world, especially in the field of life sciences. ELLS encourages and enables you to build a European network of students and graduates in your area of study.

One initiative to enhance networking is the ELLS Scientific Student Conference that is held every year at one of the ELLS universities. The aim of this conference is to provide a forum for undergraduate and graduate students to present research papers and posters and to receive critical feedback from peers and experts in their field.

During the conference, outstanding students will receive the SSC prize for presentation for best oral or poster presentation.





Why ELLS and not something else?

When considering going abroad you have lots of possibilities to choose from. You are being offered a wide range of different exchange programmes. ELLS, however, is more than just an exchange programme. If you take part in an ELLS Master's programme, you will get to study AND graduate from (at least) two universities. Studying within ELLS means easy access to international studies in Life Sciences without going through complicated and disconcerting formal procedures. If you go on a "normal" exchange, you will probably face some trouble getting your courses credited to your programme back home. As the courses you take within ELLS are already part of a programme you are participating in, this problem will not come up. For example, you can choose a topic and see which ELLS partner offers it. Or, you could first pick your favourite ELLS university and find a topic appealing to you at the "destination of your dreams".

To find out which courses are most relevant for you, you can also start with attending an ELLS Summer School or use the possibility of the Scientific Student Conference.

On all ELLS activities the language of instruction is English which means you will not only improve your language skills but also you will learn professional terminologies. English as the main teaching language is a great advantage if you want to get into your topic quickly and in depth without having to learn a totally new language. You will also have the opportunity to learn a new foreign language, as none of the ELLS partner universities are located in an English speaking country.

Perhaps now you can see what the benefits of studying within ELLS can be. Why not take the chance and study ELLS where?



4. The ELLS Universities

UNIVERSITY OF NATURAL RESOURCES AND LIFE SCIENCES, VIENNA (BOKU)

University of Natural Resources and Life Sciences, Vienna (BOKU)

Main locations: Vienna and Tulln, Austria

Size: about 12,000 students. Website: www.boku.ac.at



Departments

- Material Sciences and Process Engineering
- Biotechnology
- Water, Atmosphere and Environment
- Nanobiotechnology
- Chemistry
- Integrative Biology and Biodiversity Research
- Food Sciences and Technology
- Landscape, Spatial, and Infrastructure Sciences
- Economics and Social Sciences
- Sustainable Agricultural Systems
- Civil Engineering and Natural Hazards
- Forest and Soil Sciences
- Crop Sciences
- Agrobiotechnology, IFA Tulln
- Applied Genetics and Cell Biology

BOKU

The University of Natural Resources and Life Sciences, Vienna (BOKU) is a unique Austrian university in the fields of Life Sciences with currently about 12.000 students. Even though the number of students has more than doubled during the past ten years, students at BOKU are still experiencing a friendly, family-like atmosphere with individual interactions between students and teachers. As a significant proportion of students and teachers comes from abroad, learning and teaching at BOKU also has a highly multicultural and international flair. BOKU sees itself as an education and research centre for renewable resources, which are a necessity for human life. By connecting knowledge from the fields of natural sciences, technology and economics, BOKU works for an economically but also ecologically sustainable use of natural resources. At BOKU you can choose lectures offered in English ranging from the traditional fields of agricultural sciences, forestry and civil engineering to the newer fields of wood and fibre technology, food and biotechnology, landscape architecture, oeno-



logy, and management of environment and bioresources. Within these fields BOKU offers 9 bachelor programmes, and about 25 master's programmes. During your stay you can join courses from each study programme.

Student life in Vienna

BOKU is split into three campuses in Vienna and Tulln. The main campus Türkenschanze is in the Cottage neighbourhood, where a park and some bistros create a relaxed atmosphere. Alongside your studies, the student union provides a range of activities and events, and Vienna's city centre is easy to reach by public transport. As there are about a dozen universities in Vienna and more than 100,000 students, you will soon feel the lively student atmosphere, with a full programme of cultural and academic events just around the corner. There is more to Vienna than what usually comes to mind: of course you can try Apfelstrudel, waltz at the Life Ball or go hiking and skiing in Tyrol, but you could also enjoy BBQs, swimming and cycling on the Danube island, relax in a beach bar by the Danube canal or try out Vienna's nightlife in clubs and bars like U4, Flex and Pratersauna. At weekends you can enjoy the bike and hiking trails in the Wienerwald or take a boat to the Donau-Auen National Park. At only 8,400km² in size, Austria lies between the Alps in the west and the Puszta plains in the east, and is really worth exploring. The landscape is stunning, with mountains, lakes, historic towns and villages just waiting to be discovered. Vienna is a vibrant city, combining tradition with an international and open atmosphere. Perhaps once you're enjoying a piece of Sacher Torte in one of the famous Viennese coffee houses, before a student night out or a visit to our weekly international social night, you too will begin to understand the unique mentality of this country in the heart of Europe.

Course Catalogue: <http://online.boku.ac.at>

Contact Information

Student Affairs:

Website: <http://www.boku.ac.at/studabt/>

(Studies: <http://www.boku.ac.at/en/studienangebot/>

Admission: <http://www.boku.ac.at/en/lehre/studabt/themen/zulassung/>)

E-Mail: studabt@boku.ac.at

Student Union:

Website: <http://www.oehboku.at>

E-Mail: sekretariat@oehboku.at

Information for International Students:

Website: <http://www.boku.ac.at/int-in.html>

E-Mail: international@boku.ac.at



CZECH UNIVERSITY OF LIFE SCIENCES PRAGUE (CULS)

Česka zemědělska univerzita v Praze (ČZU)

Location: Prague, Czech Republic

Size: 24.000 students

Website: www.czu.cz/en/ <http://studuj.czu.cz/en>



Faculties and Institutes

- Agrobiology, Food and Natural Resources
- Economics and Management
- Engineering
- Environmental Sciences
- Forestry and Wood Sciences
- Tropical AgriSciences
- Institute of Education and Communication

CULS Prague

There are many reasons to come and study at CULS Prague. Currently the largest life sciences university in the Czech Republic, with a long historical tradition, CULS Prague guarantees high quality education in a wide range of specialisations. In the academic year 2014/2015 there will be nineteen MSc study programmes and seven BSc study programmes taught entirely in English. Close co-operation with detached university enterprises, as well as friendly relations amongst the students and staff make the study atmosphere at the university very pleasant and inspiring. The CULS campus, which is spread over 50 hectares of landscaped parkland on the outskirts of Prague, has a newly built Study and Information Centre, and a first class Sports Centre with a covered heated pool, a gym, aerobics classes, football field, tennis courts and sauna, as well as other facilities such as boat and ski hire. All are easily reached on foot. Outdoor sports are offered by the Sports Centre throughout the year. You can sit, relax or study on beautiful grass lawns or in parks between faculty buildings before your lecture starts. Almost all signs at our campus are bilingual – in Czech and English, which makes getting around easy even for our international visitors.





Student life in Prague

The student associations IAAS, AIESEC, etc, organize one-week trips to foreign countries during the academic year. This is a very useful experience because you can meet new people, try out different lifestyles and practise your English or another language

It takes only about 20 minutes to get to the historical centre of Prague, the capital of the Czech Republic, which is listed by UNESCO as one of the important Cultural Heritage Sites. It is full of small romantic streets, monuments, cafes, student clubs and bars. Prague also has a great many places of entertainment, theatres, operas, cinemas, music halls, exhibitions, galleries, festivals and discos. Or, if you are sport minded, you can also go skiing or hiking in one of the beautiful mountain areas in the country. Most ski and hiking resorts can be reached in just one hour by bus from Prague.

The Czech Republic is famous for its beer. CULS Prague produces its own lager beer which you can taste in one of the student pubs on campus. Additionally, every year, CULS Prague holds a “Miss Agro” competition at which the students can vote for their own “Miss”. This event is very popular with the students and many famous pop music groups appear there.

Course Catalogue: <http://www.czu.cz/en/?r=4875>

Contact Information

Student Affairs:

Website: <https://student.czu.cz/index.php>

E-Mail: helpdesk@rektorat.czu.cz

Information for International Students:

Website: <http://www.czu.cz/en/?r=954>

E-Mail: iro@czu.cz



UNIVERSITY OF COPENHAGEN, FACULTY OF SCIENCE (SCIENCE)

In Danish: Det Natur- og Biovidenskabelige Fakultet

Location: Copenhagen

Size: 9.000 full-time students (BSc and MSc) and

4.400 employees (incl. 1.000 PhD students)

Website: <http://www.science.ku.dk/english/>



- Department of Biology
- Department of Chemistry
- Department of Computer Science
- Department of Food Science
- Department of Geosciences and Natural Resource management
- Department of Mathematical Sciences
- The Niels Bohr Institute (Physics)
- Department of Nutrition, Exercise and Sports
- Department of Plant and Environmental Sciences
- Department of Food and Resource Economics
- Department of Science Education
- Natural History Museum of Denmark

Faculty of SCIENCE (SCIENCE)

On 1 January 2012 a new faculty was born at the University of Copenhagen: The Faculty of Science. The faculty is the product of a merger between two-thirds of the former Faculty of Life Sciences (LIFE) and the former Faculty of Science (NAT). In connection with the merger the field of veterinary medicine was moved from the former LIFE to the Faculty of Health and Medical Science at the University of Copenhagen.

The Faculty of Science at the University of Copenhagen – or SCIENCE – is Denmark's largest natural and life sciences research and education institution with 4.400 employees (incl. 1.000 PhD students) and 9.000 BSc and MSc students.

In terms of Life Sciences, SCIENCE covers the entire range from primary production and food production to nutrition and the welfare of both humans and animals – from nature





and landscape research to agricultural production and environmental research. SCIENCE has a large number of international students (exchange, full-degree and PhD), which contributes to a vibrant international environment. Moreover, the faculty is highly engaged in international cooperation, having partnership agreements with countries all over the world. Furthermore, all except 3 of SCIENCE's 37 MSc programmes are offered in English. We also offer a total of 22 BSc programmes. These are primarily in Danish, but international students can also find a number of courses offered in English at BSc level.

Student Life at SCIENCE and in Copenhagen

At SCIENCE you will experience a great student environment with lots of social activities and a big variety of student associations, among them a very good mentor programme for international students (exchange and full-degree). All in all SCIENCE offers you the opportunity to network with your fellow Danish and international students in an academic as well as social setting.

SCIENCE has two main campuses – the Frederiksberg Campus and the North Campus, which are both located in the central part of Copenhagen. Their central locations are both attractive and play an important part in your “Copenhagen experience”. Most of the courses offered within the field of Life Sciences take place at the Frederiksberg Campus.

While both campuses are located in the central part of Copenhagen, SCIENCE also has access to research farms in the countryside. This means you gain the advantage of being in a big city with a rich and interesting cultural and social life, but at the same time you have the advantage of being at a faculty that also offers nice park areas and easy access to the countryside.

Course Catalogue (only online): www.kurser.ku.dk (choose English at the top right hand side of the page)

Contact Information

SCIENCE International Affairs and Admissions:

<http://www.science.ku.dk/english/courses-and-programmes/student-services/international/>

E-mail: international@science.ku.dk • Phone: +45 35 33 35 33

Online Information for International Students:

<http://studies.ku.dk/> • <http://www.science.ku.dk/english/newatscience/>



SWEDISH UNIVERSITY OF AGRICULTURAL SCIENCES (SLU)

Sveriges lantbruksuniversitet (SLU)

Location: Uppsala, Alnarp and Umeå, Sweden

Size: 4,500 students, Website: www.slu.se



Faculties

- Landscape Architecture
- Horticulture and Crop Production Science
- Natural Resources and Agricultural Sciences
- Veterinary Medicine and Animal Science
- Forest Sciences

SLU

SLU is spread out all over Sweden. The southernmost campus is located in Alnarp close to beautiful beaches and pulsating cities like Malmö and the Danish capital, Copenhagen. 1,200 kilometres further north, at our campus in Umeå, you can study forestry in stunning winter scenery where skiing and all kinds of other sports belong to everyday life. The largest campus is located in Uppsala, a town with a university tradition since the 15th century and the home of famous scientists like Carl von Linné. SLU develops the understanding and sustainable use and management of biological natural resources.

The university focuses on food, animals, the forest and rural and urban development. At SLU you can study to get the traditional degrees in horticulture, veterinary science, agriculture and forestry. Instructors at SLU are conducting the most up to date research in each of the fields of study and students can therefore be sure that they are receiving the most relevant and current education. Additionally, there are three students for every teacher, which allows for a more comprehensive learning experience. A large portion of the courses offered, mainly at the Master's level, are given in English. In general, the Swedish population is very good at understanding and speaking English so you can get around very well in society without knowing Swedish.





Student life in Sweden

The student unions at SLU work together with the university to develop the educational programmes. According to Swedish legislation, students are represented in all university bodies and therefore they have a great ability to influence. Besides contributing to curricula development, the student unions also play a big role in the social life of SLU students. Students arrange sports activities, pubs, parties, discussion groups and more. Since the university is so spread out, there are eight student unions in total. This results in eight times the activities and fun that is there for you to enjoy all over Sweden!

In conclusion, Sweden, as a nation, is very concerned not only with the well-being of our own citizens, but also takes a keen interest in the on goings of the world around it. At first glance, the Swedes may also appear to be a shy and withdrawn people. Don't let yourself be fooled by appearances, however, because beneath this exterior lurks madness, sensuality, sentimentality and – last, but not least - a well-disguised national pride and self-confidence.

Course catalogue: www.slu.se/en/education/courses/

Contact information

Student Affairs:

Website: <http://www.slu.se/en/>

E-Mail: exchangestudies@slu.se

Phone: +46 18 67 10 00

Student Union:

Website: <http://www.slu.se/en/education/life-at-slu/student-unions/>

Information for International Students:

Website: <http://www.slu.se/en/education/exchange-studies/>



UNIVERSITY OF HOHENHEIM (UHOH)

Universität Hohenheim (UHOH)

Location: Stuttgart, Germany

Size: 9,900 students

Website: www.uni-hohenheim.de



Faculties

- Agricultural Sciences
- Natural Sciences
- Business, Economics and Social Sciences

UHOH

Founded in 1818 as a response to a famine crisis in the state of Württemberg, the University of Hohenheim has been a leading university in Germany in its primary areas of specialisation ever since. Research and teaching are characterized by interdisciplinarity, internationality and innovation.

Interdisciplinarity finds its most obvious realisation in the current focus of the university-wide research: Bioeconomy. This profile covers the entire bio-based value chain: from the production of bio-based materials via processing to acceptance and use.

Almost 10,000 students attend in total 41 programs (13 in English), conduct research on five research stations, four state institutes and five research centres.

The range of courses at the university is complimented by co-operation with other universities. Hohenheim cultivates international partnerships with universities and other research institutes in over 90 countries around the world. The proportion of foreign students in Hohenheim has always been high, currently standing at about 15 %. They come from over 90 countries on all continents.

Student life in Stuttgart

Imagine endless botanical gardens and university lecture halls and the university library in a beautiful 18th century palace! The University of Hohenheim is situated on a 374 hectare estate in the rural south of Stuttgart in Southern Germany and is known as one





of the most beautiful campuses in Germany. As all institutes and student housings are located in walking distance a familial atmosphere arises on campus.

The University of Hohenheim provides a broad range of activities, either by being a part of a sports team, the universities orchestra and theater group or being an active member in one of the student associations. The heart of students' life is the building "Thomas Münzer Scheuer", also known as TMS. Run solely by students, it provides a singular and alternative studying location, where the silence of the library is replaced by the warmth of coffee and students conversation. In the evenings it offers weekly cultural activities and parties, organized by the student associations. Moreover, the campus hosts the university's own vineyard and distillery. Stuttgart city nightlife is only a 20 minute ride away. The city of Stuttgart is home to famous companies such as Daimler and Porsche which also invite to their own museums. With a population of about 600,000 inhabitants Stuttgart offers a broad range of leisure activities and attractions including the State Opera, cinemas, sports events as well as the famous Cannstatter Wasen. Due to its location in the basin and mild climate, Stuttgart is known as one of the few cities with its own vineyards inside. By a walk in the vineyards you can have the greatest view on Stuttgart's city, located in a valley. The Swabian highlands and the Black Forest are within a one-hour drive and make an excellent spot for hiking, cycling, climbing or skiing. Famous historical cities such as Tübingen, Heidelberg, Freiburg and Ulm are close by. Germany's train and remote bus system make traveling all over the country quite easy.

Course Catalogue: <https://www.uni-hohenheim.de/67.html?L=1>

Contact Information

Student Counselling Centre:

E-Mail: zsb@uni-hohenheim.de

International Students Organisation:

Website: <https://iso.uni-hohenheim.de/>

Information for International Students:

Website: <https://www.uni-hohenheim.de/internationals>



WAGENINGEN UNIVERSITY (WU)

Wageningen University (WU)

Location: Wageningen, the Netherlands

Size: approx. 10.000 students

Website: www.wageningenuniversity.eu



Departments

- Agrotechnology and Food Sciences
- Animal Sciences
- Social Sciences
- Environmental Sciences
- Plant Sciences



WU

Wageningen University is one of the leading international universities in the field of healthy food and living environment. Studying at Wageningen University guarantees you premium quality education and an international quality benchmark on your curriculum vitae. Here, you will focus on current and future global issues that are of increasing importance for both industry and government. All the MSc study programmes at Wageningen University are taught in English, but it is also a requirement for the final year of the Bachelor programme. It makes it possible for students from countries all over the world to come to Wageningen to study a complete master programme or to visit Wageningen as an exchange student for a couple of months to follow specific courses that you are interested in. Especially for our international exchange student Wageningen has composed more than 50 coherent English taught minors. Because Wageningen is a relative small university, the relationship between students and teachers is personal and non-hierarchical. Our own students rate the university as the best university in the Netherlands for 9th year in a row, according to an independent Dutch Magazine. The QS World University Rankings lists Wageningen University number 2 of the world within the field of agriculture and forestry. In the field of



agriculture the NTU listed Wageningen University as the best university in the world in 2013. Furthermore, Wageningen University holds a top five position in the worldwide publication index in the field of food, agriculture, plants, animals and environment.

Student life in Wageningen

Wageningen University has a modern campus with high quality and modern educational facilities. A beautiful library is situated in the Forum building; this room alone calls for a visit to Wageningen! The campus creates the perfect atmosphere for studying, relaxing and meeting friends. Students always like to relax after a long day of studying and there are plenty of opportunities to do so at Wageningen. A variety of leisure activities are offered, especially at the sports complex where rock climbing, fitness classes and other sports courses can be taken at one of the excellent sports facilities. (International) Student-run organizations also make up for a great portion of the extracurricular activities at Wageningen and by doing so, the student community in Wageningen is quite unique compared to other universities in the Netherlands. During the week the best parties are at student associations and regular pubs, whereas on the weekend, the international club offers nice intercultural parties. Besides leisure activities like these, students organise study-related activities such as symposia and debates as well. Although Wageningen is a small city with 35,000 inhabitants, it is a very liveable one, where day to day life is easy to enjoy. Additionally, if one prefers a big city atmosphere, larger cities are only short drives away. It only takes 1.5 hours to get to Amsterdam by public transport and 1 hour to Utrecht.

Course Catalogue: www.studyhandbook.wu.nl

Contact Information

Student Affairs:

Website: www.wageningenuniversity.eu

Phone: +31 317 484848

Email: study@wur.nl

Student Union

Website: www.wageningenuniversity.eu/studentassociations

Information for International Students

Website: www.exchange.wur.nl



WARSAW UNIVERSITY OF LIFE SCIENCES -SGGW (WULS-SGGW)

Szkoła Główna Gospodarstwa Wiejskiego w Warszawie - SGGW

Location: Warsaw, Poland

Size: 27,000 students

Website: www.sggw.pl



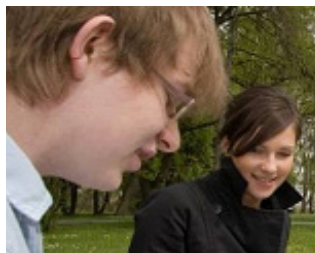
Faculties

- | | |
|--|---|
| ■ Agriculture and Biology | ■ Economic Sciences |
| ■ Veterinary Medicine | ■ Food Sciences |
| ■ Forestry | ■ Human Nutrition and Consumer Sciences |
| ■ Horticulture, Biotechnology and Landscape Architecture | ■ Production Engineering |
| ■ Civil and Environmental Engineering | ■ Social Sciences |
| ■ Wood Technology | ■ Applied Informatics and Mathematics |
| ■ Animal Sciences | |

WULS-SGGW

Warsaw University of Life Sciences - SGGW (WULS-SGGW), with its nearly 200-year tradition is one of the oldest and the largest universities in Poland. It is also one of the most modern universities, where tradition and modernity meet. The campus has a historic part, with an 18th century palace, and a contemporary part where all faculty buildings and dormitories are situated. WULS-SGGW offers good facilities and infrastructure in one place. On our 65-hectare main campus we have 9 dormitories, a modern library, a computer centre, a sports centre (with tennis courts, a sports hall and a swimming pool), a language centre, a veterinary clinic and much more. The campus is located in the southern part of Warsaw and can be easily reached from the city centre by subway or by bus. 1,200 teachers make sure that you will gain plenty of knowledge and practical skills. WULS-SGGW has been declared number one in the rankings of life science universities in Poland, and has always been in the top ten of Polish universities.





Student life in Warsaw

Studying at WULS-SGGW can mean both: education and enjoyment, and when it is time to relax you can choose among the three clubs that are located on campus! There is also a group of Polish students to take care of you, so you don't need to worry about any formalities.

Warsaw, as the capital of Poland, is the centre of culture, politics and economy. It is the biggest city in Poland, and we are sure you will be surprised at the relatively low living and leisure costs, which will allow you to spend more money on things like traveling around Central Europe.

Warsaw is also a city full of young people, a high percentage being students from all over Poland as well as abroad. This high number of students creates the atmosphere of the city. For example, after classes, large numbers of students may be seen studying in the many libraries and shops, where you can read books while drinking tea or coffee. Not only does Chopin await you; but also Warsaw does not lack entertainment: Here concerts, exhibitions, festivals, parties and many other cultural events are within reach on a regular basis.

Course Catalogue: http://www.sggw.pl/en/international-cooperation_/information-for-students/sggw-studies-in-english/subjects-in-english

Contact Information

Student Affairs:

Phone: +48 59 310 25

Information for International Students:

Website: http://www.sggw.pl/en/international_cooperation

E-Mail: incoming@sggw.pl

Phone: +48 22 593 10 52



Partners



中國農業大學
China Agricultural University

China Agricultural University (CAU), directly subordinated to the Ministry of Education, is one of the top ranked key national universities in China. The ultimate goal of CAU is to make it one of the leading comprehensive, research-oriented and internationalized agricultural universities of the world as reflected by its mandate – Tackle Problems the People Face, Cultivate Talents the World Needs.



Cornell University
College of Agriculture
and Life Sciences

Cornell is a private, Ivy League university and the land-grant University for New York State. Cornell's mission is to discover, preserve, and disseminate knowledge; produce creative work; and promote a culture of broad inquiry throughout and beyond the Cornell community. Cornell also aims, through public service, to enhance the lives and livelihoods of our students, the people of New York, and others around the world.



האוניברסיטה העברית בירושלים
The Hebrew University of Jerusalem

The Robert H. Smith Faculty of Agriculture, Food and Environment of the Hebrew University of Jerusalem is located in Rehovot, on Israel's Coastal Plain. Teachers and researchers of the Faculty are involved in cutting edge basic and applied science covering topics such as plant adaptation to stress, functional foods, soil and water reclaiming, bio-engineering, integrated pest management, fisheries, livestock improvement, human nutrition and agricultural economics.



Lincoln
University
Te Whare Wānanga o Aotearoa
Aotearoa-New Zealand
New Zealand's specialist land-based university

As New Zealand's specialist land-based university, Lincoln University has a long tradition in offering qualifications to help address global issues such as food production and security, environmental management and sustainability, supply chain and lifestyle. Whether its production, science, agribusiness, environmental management, technology, tourism, sport, design or property, no other university specializes in meeting the demands, challenges and opportunities of the world's land-based industries.



Acknowledgements

Published by / responsible for content:

ELSA - Euroleague Student Association:

<http://www.euroleague-study.org/en/elsa/index.php>

Editors:

Members of ELSA

ELLS Secretariat

International Relations Officers of ELLS

Photographs

Cover Photo: Mikael Wallerstedt

© ELLS Universities

Graphic Design

Instant, Design GmbH

Schleifmühlgasse 9/10, A-1040 Vienna

office@instant.at

www.instant.at

Printing

SLU Service Rero

repro@slu.se

First published in 2010

Published in October 2014



Euroleague

FOR LIFE SCIENCES



**University of Copenhagen,
Faculty of Science (SCIENCE)**
Copenhagen, Denmark



**Swedish University of
Agricultural Sciences (SLU)**
Uppsala, Sweden



**Czech University of Life
Sciences Prague (CULS)**
Prague, Czech Republic



**University of
Hohenheim (UHOH)**
Stuttgart, Germany



**Warsaw University of
Life Sciences (WULS - SGGW)**
Warsaw, Poland



**Wageningen University
and Research Centre (WUR)**
Wageningen, The Netherlands



**University of Natural Resources
and Life Sciences, Vienna (BOKU)**
Vienna, Austria



Lincoln University
Aotearoa, New Zealand



Cornell University
Ithaca, New York, USA



China Agricultural University
Beijing, China



The Hebrew University of Jerusalem
Jerusalem, Israel