

WCR specs

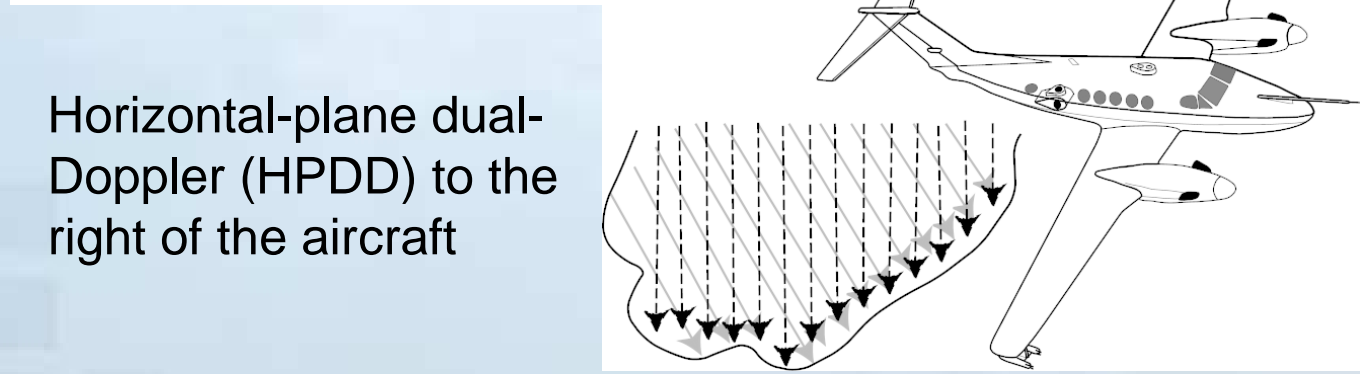
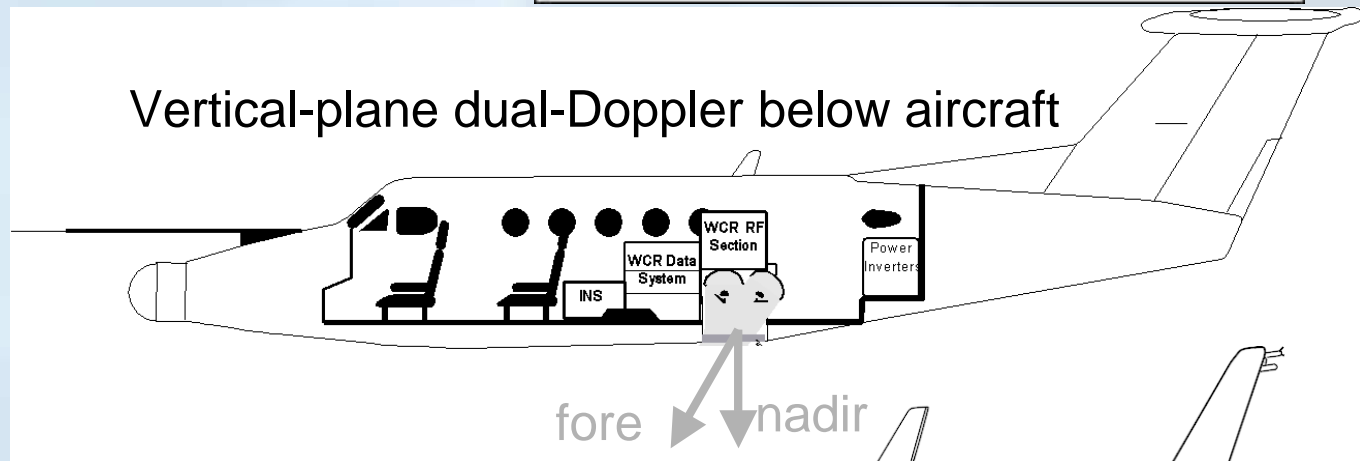
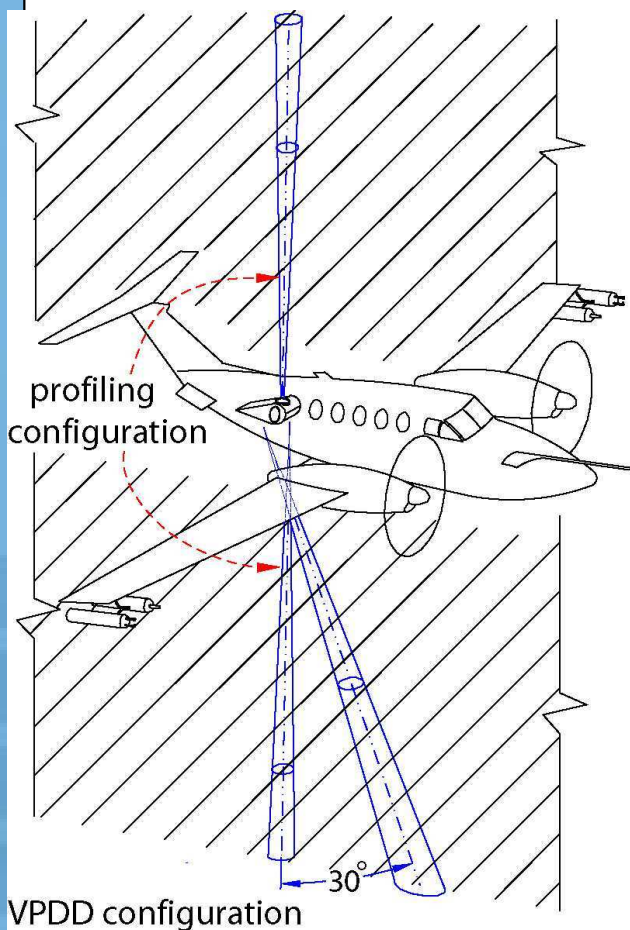
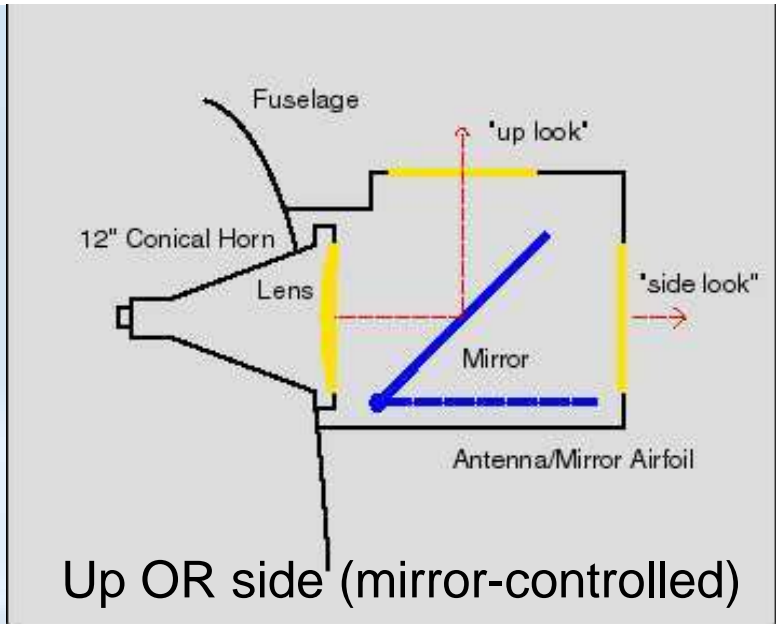
AR

- **95 GHz, dual-polarization**
- **Pulse width: 100-500 ns**
- **Beamwidth: $<1^\circ$**
- **Volume resolution @ 3 km range: < 40 m**
- **Minimum detectable signal (1 km): -30 to -35 dBZ**
- **Airborne:** all fixed-antenna apps
 - UW King Air w/ 1 antenna (since 1995)
 - UW King Air w/ 4 antennas (since 2002)
 - NCAR C-130 w/ 2 antennas (DYCOMS 2001)
 - French Fokker 27 w/ 2 antennas (TRAC98 campaign in France)
 - Canadian Convair w/ 1 antenna (WISP 2003)
- **Ground:** fully mobile
 - scanning: 360/180 deg azimuth/elevation (since 2003)
- See <http://www-das.uwvo.edu/wcr/>

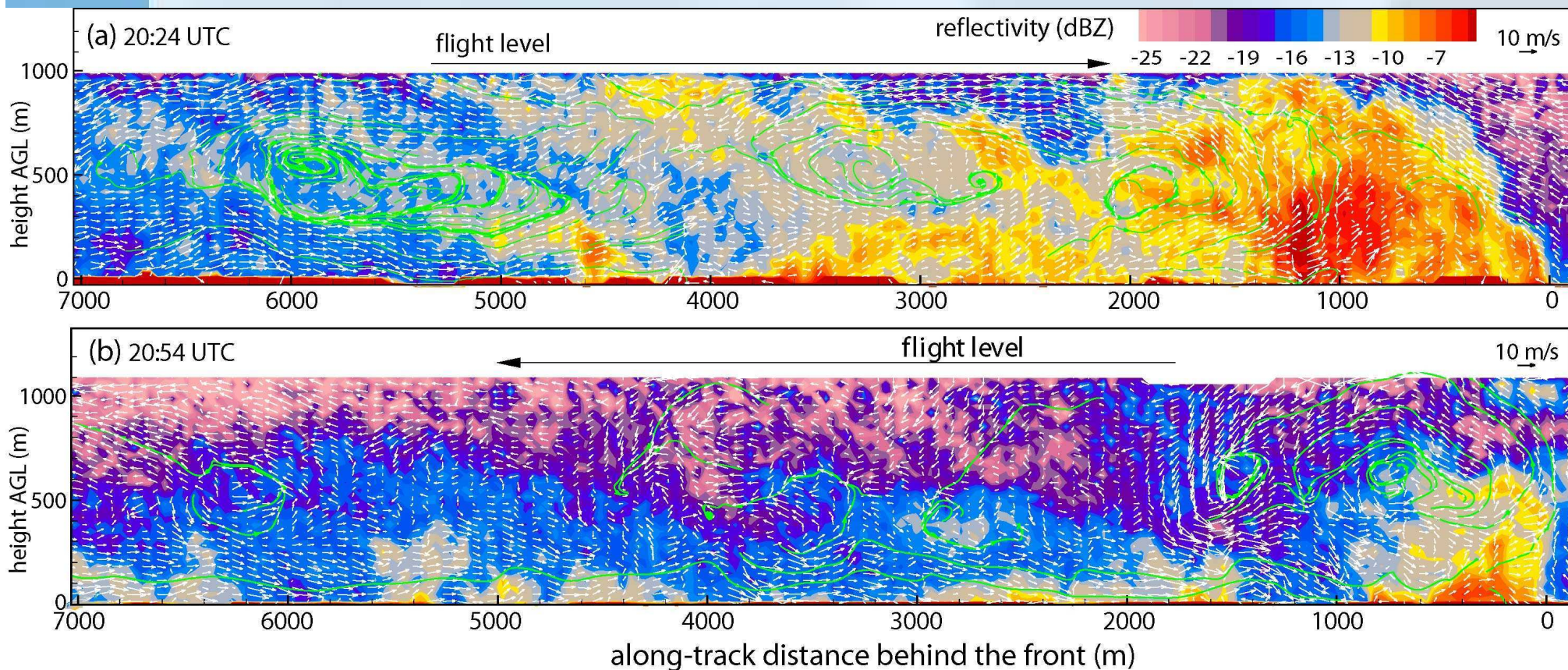
WCR antenna

1

- 4 antennas to cover the horizontal and vertical planes along a level flight track
- (NEW) electronic fast switching allows all 4 antennas to be used simultaneously.



UWKA & WCR



Courtesy Bart Geerts (UW)